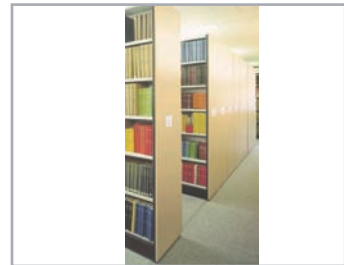




compactus





Office Maxtor

**Save valuable time,
money and space
with Brownbuilt
Office Maxtor
Mobile Storage**

Brownbuilt developed Mobile Storage Systems in Australia during the 1940s and continued development of these products has resulted in Australia's most comprehensive range.

Brownbuilt Office Maxtor has applied the concept of mobilising static shelving with a transferable access aisle to the office environment. Among its many attributes, the key benefits are: SAVING SPACE, SAVING TIME and SAVING MONEY.

Save Space

Compact storage means that costly floor space is saved. By using a single access aisle, Office Maxtor can reduce the floor area required for storage with conventional filing systems by up to 50%. This allows extra space for additional storage or personnel.

Save Time

Maxtor units promote the centralisation of office storage, with reductions in file access and retrieval time, plus improved records management, through better organization.

Office Maxtor has been specifically designed for high density storage and integration into any office environment, with a wide range of component sizes and configurations.

SpeedRack storage consultants and engineers can design and manufacture an individual Office Maxtor installation with tailored dimensions to maximise your storage capabilities.

Office Maxtor Mobile Storage



Shelving

- Internal bolted assembly for quality exterior finish.
- Welded internal shelf support channels.
- 25mm vertical shelf adjustment.
- Simple adjustable clip support system.



Mobiles

- Sturdy welded mobiles supported by sealed load bearing wheels.
- Lateral guide wheels prevent tipping.
- Linking kits available for two-bay wide (tandem) Maxtor units.
- Mechanically-assisted mobile system available as standard or as a retrofit option.



Storage

- Standard 325mm and 425mm deep bays for storage flexibility and space utilisation.
- Common interior cabinet dimensions ensure compatibility with Brownbuilt cupboards and shelving.
- Wide range of accessories.



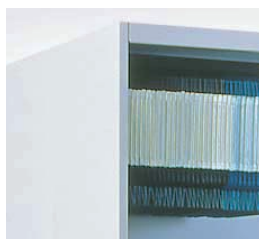
Base

- Welded, pre-fabricated, steel base modules minimise floor preparation.
- Modular platform design facilitates future extensions, re-configurations or relocation.
- Adjustable feet for uneven floors.
- Pre-coated infill floor sections provide a durable, stable access surface.



Locking

- Standard single-point, key-locking mechanism fixes into platform base.
- Optional overhead locking system available for additional security.
- Class B and C Security locking units available to approved government departments and agencies.



Cabinets

- Flush fitting cabinets protect stored items.
- Wide range of cabinet sizes maximise space utilisation.
- Standard cabinet height range up to 2150mm.
- 162mm deep cabinet design, specific for video tapes.

Adaptability

Office Maxtor units are available in an extensive range of standard models, whilst the modular design allows units to be configured to suit individual requirements, including two-bay wide hand-operated (tandem) units, mechanically-assisted tandem units, and video storage units.

Finish

Office Maxtor units are painted using modern thermo-set powder coatings compliant with Australian Standard AS 4506-1998 (Service Category 1&2), which are more durable and scratch resistant than baked enamel.

Note: Bases, mobiles and handles are finished in Black

Brownbuilt BOC Range



BOC-A

Base Size: 2560 x 950 or 1245
 Carcass Height: 2000/2150
 Overall Height: 2170/2320
 Aisle Width: 860
 Shelf Size: 900 or 1200 x 400
 Storage Capacity: (900) 21.6 Lineal Metres
 (1200) 28.8 Lineal Metres



BOC-B

Base Size: 2560 x 950 or 1245
 Carcass Height: 2000
 Overall Height: 2170
 Aisle Width: 610
 Shelf Size: 900 or 1200 x 300
 Storage Capacity: (900) 32.4 Lineal Metres
 (1200) 43.2 Lineal Metres



BOC-C

Base Size: 2560 x 950 or 1245
 Carcass Height: 2000
 Overall Height: 2170
 Aisle Width: 735
 Shelf Size: 900 or 1200 x 300 & 400
 Storage Capacity: (900) 27.0 Lineal Metres
 (1200) 36.0 Lineal Metres



BOC-D

Base Size: 3200 x 950 or 1245
 Carcass Height: 2000/2150
 Overall Height: 2170/2320
 Aisle Width: 650
 Shelf Size: 900 or 1200 x 400
 Storage Capacity: (900) 32.4 Lineal Metres
 (1200) 43.2 Lineal Metres



BOC-E

Base Size: 3200 x 950 or 1245
 Carcass Height: 2000
 Overall Height: 2170
 Aisle Width: 600
 Shelf Size: 900 or 1200 x 300
 Storage Capacity: (900) 43.2 Lineal Metres
 (1200) 57.6 Lineal Metres



BOC-F

Base Size: 3200 x 950 or 1245
 Carcass Height: 2000
 Overall Height: 2170
 Aisle Width: 625
 Shelf Size: 900 or 1200 x 300 & 400
 Storage Capacity: (900) 37.8 Lineal Metres
 (1200) 50.4 Lineal Metres



BOC-G

Base Size: 4160 x 950 or 1245
 Carcass Height: 2000/2150
 Overall Height: 2170/2320
 Aisle Width: 760
 Shelf Size: 900 or 1200 x 400
 Storage Capacity: (900) 43.2 Lineal Metres
 (1200) 57.6 Lineal Metres



BOC-H

Base Size: 4160 x 950 or 1245
 Carcass Height: 2000
 Overall Height: 2170
 Aisle Width: 585
 Shelf Size: 900 or 1200 x 300
 Storage Capacity: (900) 59.4 Lineal Metres
 (1200) 79.2 Lineal Metres



BOC-J

Base Size: 4160 x 950 or 1245
 Carcass Height: 2000
 Overall Height: 2170
 Aisle Width: 735
 Shelf Size: 900 or 1200 x 300 & 400
 Storage Capacity: (900) 48.6 Lineal Metres
 (1200) 64.8 Lineal Metres

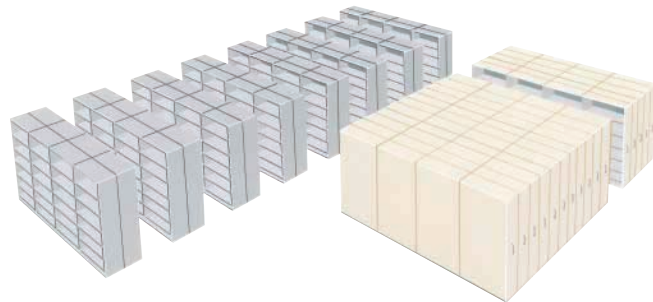
Available with 1850mm high carcass • Available as Class B & C Security units to approved government departments
 • 162mm deep Video Maxtor and Mechanically-Assisted tandem units available on application • Dimensions shown
 in millimetres • Maximum recommended load per mobile 500kg • Storage capacities based on 6 storage levels per
 bay • Maximum evenly distributed load per shelf 900 wide-110kg, 1200 wide - 75kg.

Maxtor Storage Systems



Maxtor Storage Systems have been designed to save space, time and money through the concept of mobilising static shelving by mounting the shelving bays onto steel frames (mobiles). All Industrial Maxtor mobiles are assembled with steel crowned load wheels, fitted with ball bearings for ease of movement and to suit varying load requirements. Lateral guide assemblies in each mobile ensure correct alignment during operation.

Maxtor Mobile Storage Systems operate on steel track sections that are accurately installed onto a concrete floor surface. These sections can be fitted with an optional ramped timber false floor to provide level trolley access. Alternatively, tracks can be laid into rebates in the concrete floor surface for unhindered operator access. By using a single transferable aisle for all picking faces a Maxtor Mobile storage system can reduce the floor area of an equivalent number of static shelving units by up to half. Advanced engineering ensures that Maxtor mobiles can be easily moved, even when fully loaded, for rapid access to stored goods.



Brownbuilt Select

Maxtor Mobile Storage Systems can incorporate most types of Brownbuilt Shelving Systems, offering all the flexibility and benefits available from Australia's most extensive range of static shelving and storage accessories.

Where storage requirements dictate a customised solution, SpeedRack storage consultants and engineers can design and manufacture an individual Maxtor installation with tailored dimensions to maximise storage capabilities.

Inventory Control

Maxtor Mobile Storage Systems allow for centralisation of stored products, reducing access and retrieval time, whilst promoting good housekeeping and assisting with inventory control.

Security

Mobiles can be secured by key-activated locking systems. Top covers and vertical rubber seals may be fitted to shelving uprights to provide protection against dust. The steel structure, when closed, helps protect stored items against fire and water damage.

Modular

The modular design of Maxtor Mobile Storage Systems facilitates future extension, re-configuration or relocation to suit changing storage needs.

Performance

Maxtor Mobile Storage Systems have an unrivalled level of reliability, proven over many years, plus a comprehensive national support network. The quality design of Maxtor Mobile Storage Systems and their components ensures low maintenance costs.

Mechanically-Assisted Maxtor



Light Duty RUT Upright



Special End Uprights and Back Panels

The Brownbuilt Mechanically-Assisted Maxtor is designed for ease of movement in medium to heavy duty storage applications for office, warehouse and industrial environments. A manually operated Slimline Operating Console at the end of each mobile moves the Maxtor system by means of a chain driven mechanism. The drive system requires a force of only 10kg at the operating handle to move loads of up to 12 tonnes. Brownbuilt Slimline Operating Consoles can be configured with either Brownbuilt Safewind Handle or Posi-Drive Wheel systems to suit individual applications and are mounted to maximise operator aisle access. Mechanically-assisted Maxtor Systems can also be specified with a mobile-mounted, key-activated Slimline Locking console, providing additional security when the unit is closed.



Safewind Handle

Brownbuilt's Safewind handle is a unique design incorporating a gravity-based, self-disengaging mechanism. Handle engagement is activated after turning the handle through 90°. The Safewind handle is deactivated, when released, to ensure operator safety when the mobiles are free-wheeling.



Posi-Drive Wheel

Brownbuilt offers the option of a positively engaged attachment for the Slimline Console. Manufactured from quality steel, the Posi-Drive Wheel has a diameter of 400mm to reduce operating rotations and dish depth of only 70mm to reduce the overall mobile width.

Capacity Options

Mechanically-Assisted Maxtor mobiles are designed as multi-track systems with a maximum standard mobile width of 6300mm and can be specified with a number of Brownbuilt Shelving Systems from Light Duty RUT through to Unichannel® Shelving to suit particular storage applications.

Brownbuilt offers two load wheel capacities for additional system flexibility:

Standard: Maximum mobile weight of 6000kg (3 track system)

Heavy-duty: Maximum mobile weight of 9000kg (3 track system) (Heavy-duty load wheels available on request.)

Hand-Operated Maxtor



Brownbuilt Hand-Operated Maxtor provides an economical and convenient storage system for applications ranging from offices, archives, libraries, hospitals and retail outlets to light-duty warehouse storage. The high quality mobile design ensures ease of movement, with a force of only 6kg needed to move mobiles, up to a recommended maximum load of 2 tonnes per mobile. Hand-Operated Maxtor systems are normally used for light-duty storage situations combined with Brownbuilt Light or Medium Duty RUT Shelving to a maximum advisable mobile width of three (3) bays, up to 2700mm. Single-sided mobiles are installed with overhead stabilisers and track keeper plates to prevent tipping, with all mobiles including lateral guide wheels for operator safety. Brownbuilt Maxtor utilise high quality steel tracks for support and stability, with the option of galvanised track and channels, to suit in-floor slab track installations, for increased product durability.

SLIMLINE LOCKING CONSOLE

Hand Operated Maxtor systems can be specified with a mobile-mounted, key-activated Slimline Locking Console, providing additional security when the unit is closed.

Aladdin Electrically-Operated Maxtor

The Brownbuilt Aladdin Maxtor was the first computer controlled Mobile Storage System to be developed in Australia. With simple push-button operation and the latest technical developments, Aladdin represents the most sophisticated Mobile Storage System available.

Computer technology and electronic controls ensure that Aladdin is a reliable and convenient solution for medium to heavy-duty storage, allowing movement of total system loads up to 84 tonnes with high frequency operation.

Aladdin can be configured with a wide range of shelving designs from Light Duty RUT through to Heavy Duty shelving and can be supplied with laminated exterior panels for installations requiring colour coordinated or architecturally aesthetic appearances.

Operator safety is of prime importance with Aladdin Maxtor and a number of safety systems are fitted as standard or available as options:

AISLELOCK

For additional operator safety, an electronic aisle lock is standard for all Aladdin Systems to prevent activation of any other aisle select button until the lock-out is deactivated.

ALARMS

Optional safety buzzer alarms can be installed on all non-aisle lock systems to indicate to operators that the system has been activated and is about to move.

DIAGNOSTIC SYSTEM

A system of LED warning lights advise operators of the systems operational status.

LIGHTING

Where natural lighting is inadequate, optional overhead cantilevered lighting systems can be fitted to each aisle and activated over a specific aisle when opened.



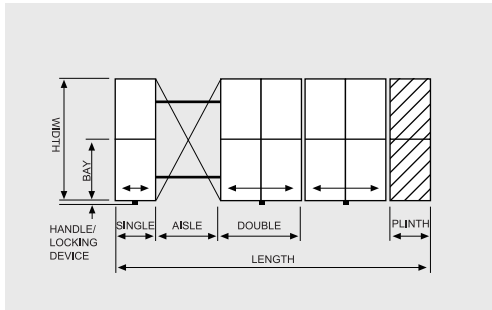
PUSH BUTTON CONTROL



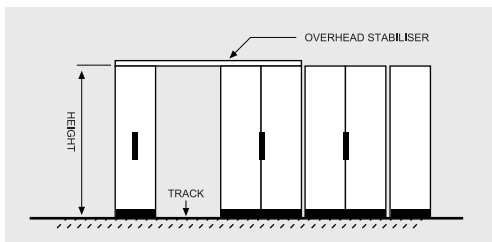
Aladdin Maxtor systems use geared, directdrive electric motors that are fitted to each mobile and capable of moving loads of up to 6 tonnes per mobile. Modern Program Logic Controllers provide access to any aisle by pressing a single button adjacent to the required aisle. Overhead pantograph arms provide flexible electrical links to each mobile without obstructing access.

3-6

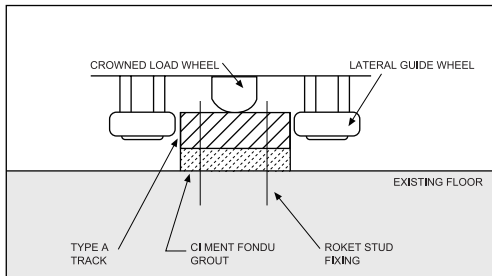
Mobile Storage Specifications



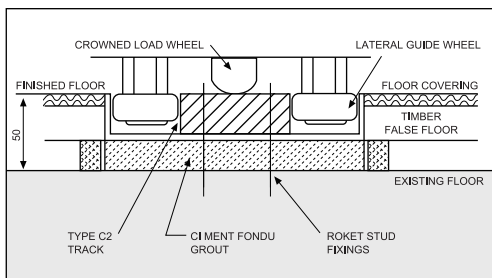
PLAN



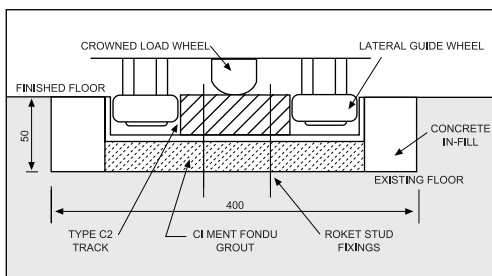
ELEVATION



ON FLOOR TRACK



**ON FLOOR TRACK
(FIXED TIMBER FALSE FLOOR)**



IN FLOOR SLAB TRACK

PLAN SIZE

UNIT WIDTH:

(Bay/Shelf width x number of bays wide) + 25mm.

NOTE:

D Handle increases width + 75mm.

Safewind Handle increases width + 165mm.

Steering Wheel increases width + 105mm.

Locking Console increases width + 35mm.

UNIT LENGTH:

[(Shelf depth + 40mm) x number of single sided stacks] +

[(Shelf depth x 2 + 70mm) x number of double sided stacks] + (aisle width).

HEIGHT

HAND OPERATED AND MECHANICALLY ASSISTED:

Height to top of shelf = Shelving height + 175mm.

Height to top of overhead guide = Shelving height + 255mm.

ALADDIN:

Min clearance height = Shelving height + 375mm to top of mobile control box.

NOTE: Dimensions include 25mm cement thickness.

WIDTH	MAXTOR TYPE PLINTH/MOBILE		
	HO	MA	EO
900	✓		
1200	✓		
1500	✓		
1650	✓		
1800	✓	✓	✓
2250	✓	✓	✓
2400	✓	✓	✓
2550	✓	✓	✓
2700	✓	✓	✓
3000		✓	✓
3450		✓	✓
3600		✓	✓
4500		✓	✓
5400		✓	✓
6300		✓	✓

DEPTH	MAXTOR TYPE PLINTH/MOBILE		
	HO	MA	EO
300	✓	✓	✓
350	✓	✓	✓
400	✓	✓	✓
450	✓	✓	✓
500	✓	✓	✓
600	✓	✓	✓

HO - Hand-Operated Maxtor.

MA - Mechanically-Assisted Maxtor.

EO - Aladdin Electrically-Operated Maxtor.

NOTE:

- All single-face mobiles configured with a stabiliser system.
- 2 track systems used for mobiles up to 4500mm wide.
- 4500mm and wider mobiles supplied with 3 track system.
- Mobiles available in multiples of 750mm, 900mm, and 1200mm bay widths.